

Assessment Activities in a Distance Teaching University

I-HE2023



Marie-Hélène Hébert, Serge Gérin-Lajoie, Cathia Papi & Eve Carbonneau Aghaby (TELUQ University)



01

INTRODUCTION

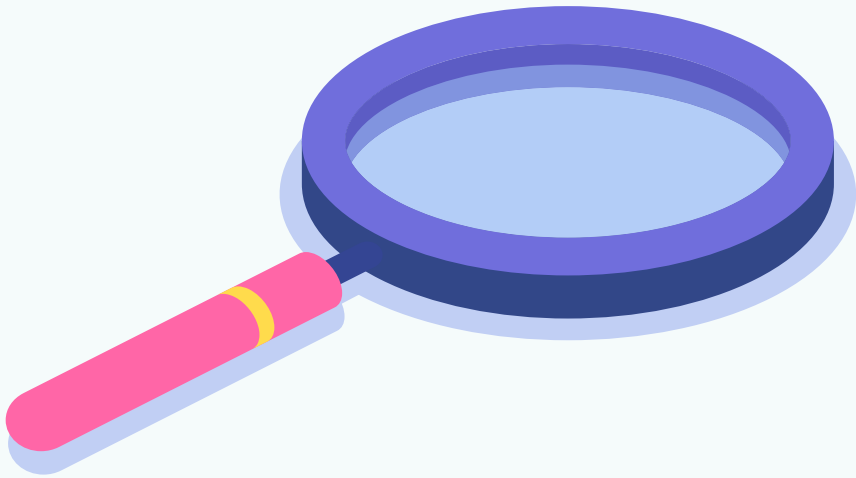
CONTEXT

Distance teaching has been growing continuously for several years and accelerated with the COVID-19 pandemic.



This has led to many educators re-evaluating how they assess their students' learning.

ASSESSMENT



How students' learning is assessed at TELUQ University?

OBJECTIVE



The purpose of this presentation is to share findings related to data collection conducted through **175 online courses** at TELUQ University.

937 assessment activities were analyzed using an analysis tool which provides a detailed characterization of **20 components** of assessment activities.



FINDINGS

02

Key questions

Assessment task

Distribution methods

Student production

Marking and feedback

1

2

3

4

5

6

7

8

9

10

11

12

13

14

15

16

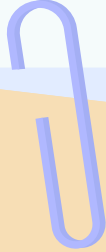
17

18

19

20

Q1 : What assessment activity students carry out?



Linked to question 8,
we'll come back to this
later.

Key questions

Assessment task

Distribution methods

Student production

Marking and feedback

1

2

3

4

5

6

7

8

9

10

11

12

13

14

15

16

17

18

19

20

Q2: Is the assessment activity aligned with the learning targets?

ALIGNMENT



Course objectives



Learning



Assessment

99%

of assessment activities are aligned with the learning targets.

Key questions

Assessment task

Distribution methods

Student production

Marking and feedback

1

2

3

4

5

6

7

8

9

10

11

12

13

14

15

16

17

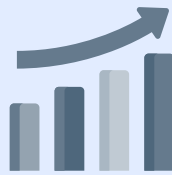
18

19

20

Q3: Is the assessment activity in continuity with the others?

PROGRESS



26%

of assessment activities are based, at least in part, on previously assessed content.



73%

of assessment activities involve new content.

Key questions

Assessment task

Distribution methods

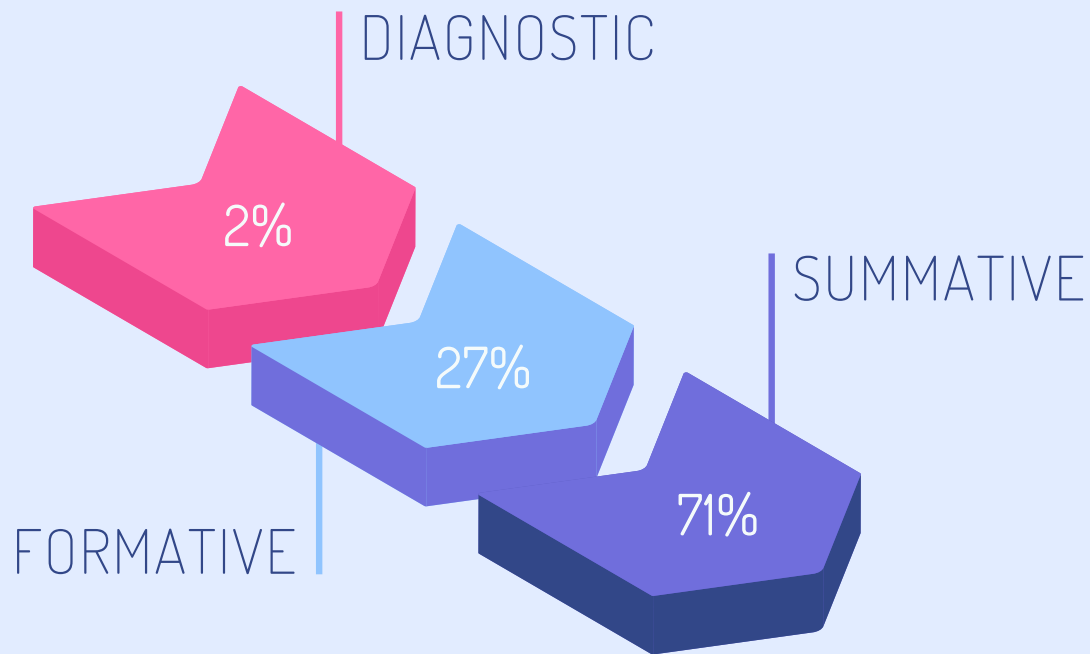
Student production

Marking and feedback

- 1
- 2
- 3
- 4
- 5
- 6
- 7
- 8
- 9
- 10
- 11
- 12
- 13
- 14
- 15
- 16
- 17
- 18
- 19
- 20

Q4: What is the function of the assessment activity?

FUNCTION



Key questions

Assessment task

Distribution methods

Student production

Marking and feedback

- 1
- 2
- 3
- 4
- 5
- 6
- 7
- 8
- 9
- 10
- 11
- 12
- 13
- 14
- 15
- 16
- 17
- 18
- 19
- 20

Q5: Who is subject to the assessment activity?

WHO



Student



Team

99.8% of assessment activities assess the student.

Key questions

Assessment task

Distribution methods

Student production

Marking and feedback

- 1
- 2
- 3
- 4
- 5
- 6
- 7
- 8
- 9
- 10
- 11
- 12
- 13
- 14
- 15
- 16
- 17
- 18
- 19
- 20

Q6: What learning is assessed?

WHAT



Product



Process

89%
of assessment activities
assess a product.

Key questions

Assessment task

Distribution methods

Student production

Marking and feedback

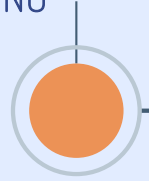
- 1
- 2
- 3
- 4
- 5
- 6
- 7
- 8
- 9
- 10
- 11
- 12
- 13
- 14
- 15
- 16
- 17
- 18
- 19
- 20

Q7: When the assessment activity takes place?

WHEN

2%

AT THE BEGINNING



DURING

57%

17%

AT THE END

FROM BEGINNING TO END

24%

Key questions

Assessment task

Distribution methods

Student production

Marking and feedback

1

2

3

4

5

6

7

8

9

10

11

12

13

14

15

16

17

18

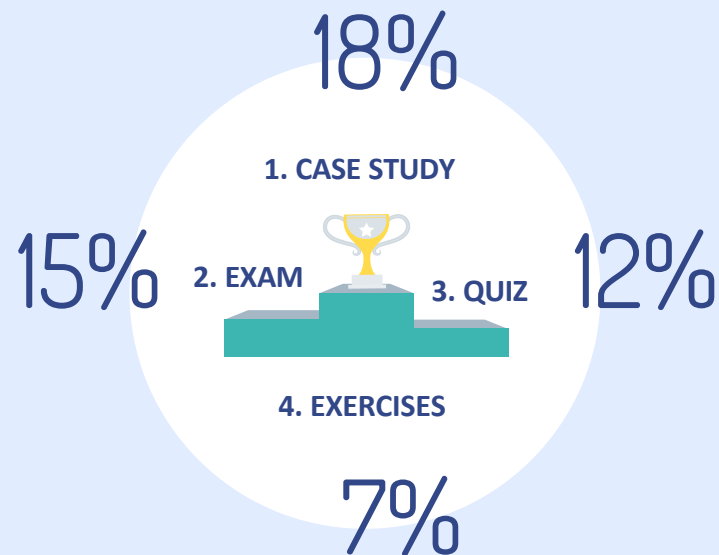
19

20

Q8: What type of assessment activity is it?

TYPE

The most frequently used types of assessment activities are:



Key questions

Assessment task

Distribution methods

Student production

Marking and feedback

- 1
- 2
- 3
- 4
- 5
- 6
- 7
- 8
- 9
- 10
- 11
- 12
- 13
- 14
- 15
- 16
- 17
- 18
- 19
- 20

Q9: What production is expected from students?

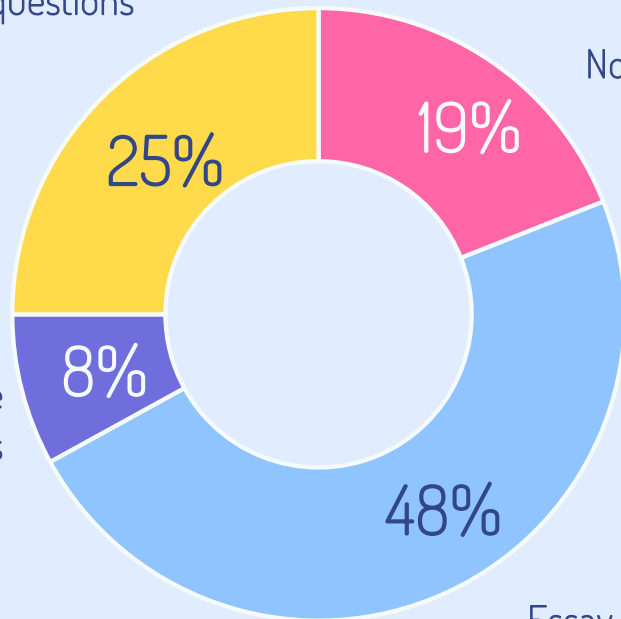
PRODUCTION

Objective and essay questions

No question

Objective questions

Essay questions



Key questions

Assessment task

Distribution methods

Student production

Marking and feedback

- 1
- 2
- 3
- 4
- 5
- 6
- 7
- 8
- 9
- 10
- 11
- 12
- 13
- 14
- 15
- 16
- 17
- 18
- 19
- 20

Q10: In what format are instructions presented?

FORMAT



Text



Video



Audio

97%

of assessment activities include instructions in text format.

Key questions

Assessment task

Distribution methods

Student production

Marking and feedback

1

2

3

4

5

6

7

8

9

10

11

12

13

14

15

16

17

18

19

20

Q11: On what media are instructions distributed?

MEDIA



For **98%** of assessment activities, instructions are distributed on the course website.

Key questions

Assessment task

Distribution methods

Student production

Marking and feedback

1

2

3

4

5

6

7

8

9

10

11

12

13

14

15

16

17

18

19

20

Q12: When are the instructions shared?

TIME



For **99.9%** of assessment activities, instructions are available at all times.

Key questions

Assessment task

Distribution methods

Student production

Marking and feedback

- 1
- 2
- 3
- 4
- 5
- 6
- 7
- 8
- 9
- 10
- 11
- 12
- 13
- 14
- 15
- 16
- 17
- 18
- 19
- 20

Q13: What support is provided during the assessment activity?

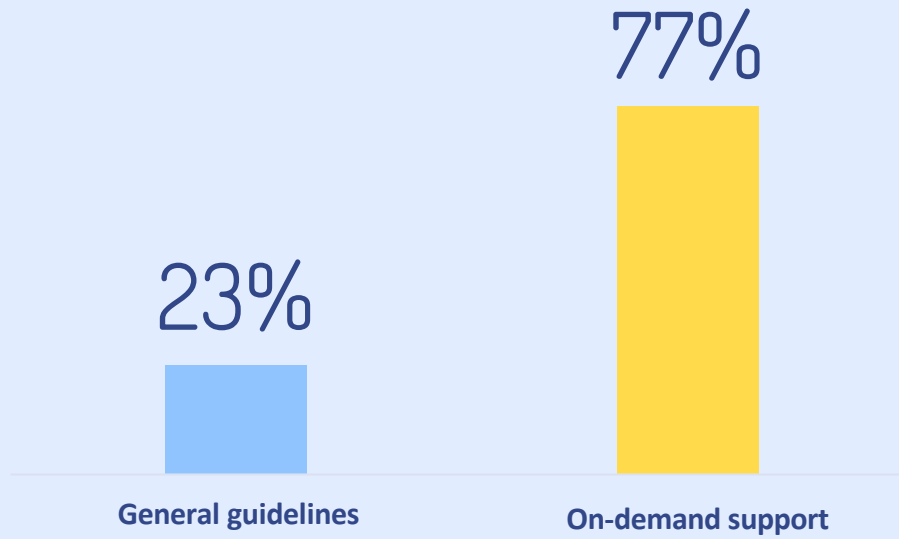
SUPPORT



General guidelines



On-demand support



Key questions

Assessment task

Distribution methods

Student production

Marking and feedback

1

2

3

4

5

6

7

8

9

10

11

12

13

14

15

16

17

18

19

20

Q14: What media do students use to carry out the assessment activity?

MEDIA

88%

of assessment activities use text as the main media.



Key questions

Assessment task

Distribution methods

Student production

Marking and feedback

1

2

3

4

5

6

7

8

9

10

11

12

13

14

15

16

17

18

19

20

Q15: What method is used by students to submit their production?

METHOD

60% of assessment activities require students to use the institutional assignment tool.



Key questions

Assessment task

Distribution methods

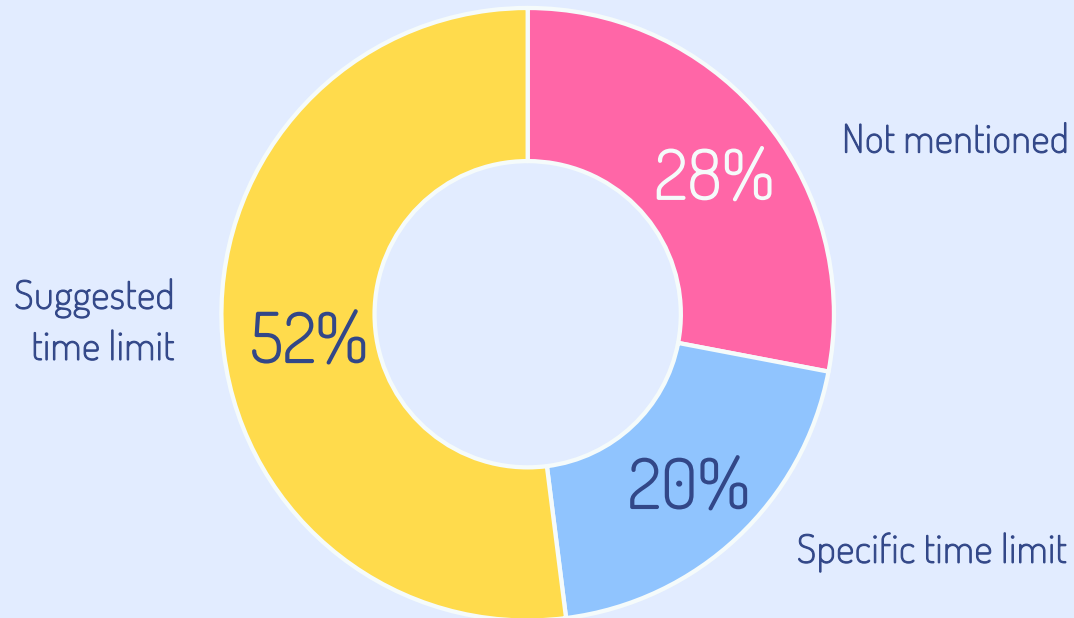
Student production

Marking and feedback

- 1
- 2
- 3
- 4
- 5
- 6
- 7
- 8
- 9
- 10
- 11
- 12
- 13
- 14
- 15
- 16
- 17
- 18
- 19
- 20

Q16: How much time do students have to carry out the assessment activity?

TIME



Q17: Who marks the assessment activity?

MARKER



92% of summative assessment activities are marked by teachers.

67% of formative assessment activities are marked by students.

Key questions

Assessment task

Distribution methods

Student production

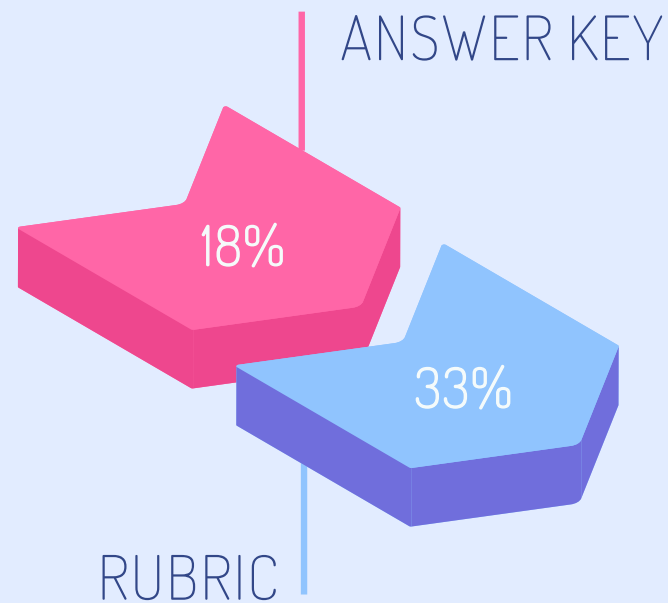
Marking and feedback

- 1
- 2
- 3
- 4
- 5
- 6
- 7
- 8
- 9
- 10
- 11
- 12
- 13
- 14
- 15
- 16
- 17
- 18
- 19
- 20

Q18: What tool is used to mark the assessment activity?

TOOL

The most frequently used tools to mark the assessment activities are:



Key questions

Assessment task

Distribution methods

Student production

Marking and feedback

1

2

3

4

5

6

7

8

9

10

11

12

13

14

15

16

17

18

19

20

Q19: What feedback is given to students?

FEEDBACK



For **99%** of assessment activities, feedback is given in text format.

For **72%** of assessment activities, feedback is not given instantly.

Key questions

Assessment task

Distribution methods

Student production

Marking and feedback

1

2

3

4

5

6

7

8

9

10

11

12

13

14

15

16

17

18

19

20

Q20: What method is used by teachers to submit their marking?

METHOD

65% of assessment activities require teachers to use the institutional assignment tool.



THANK YOU

Questions?

